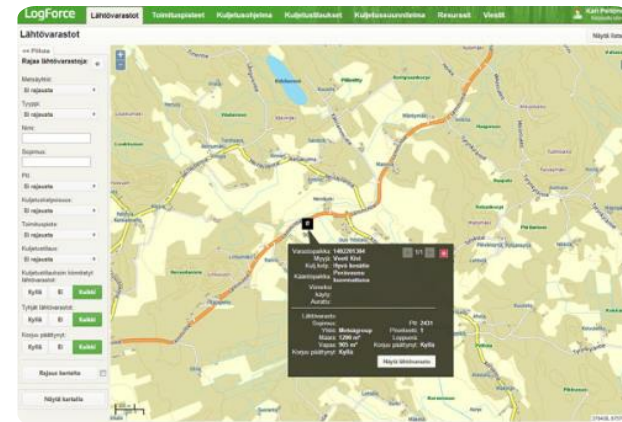


CFLogistics (LogForce) | Planning tool for forestry contractors



CFLogistics (LogForce) is used by both forest companies and contractors. The planner can ensure that requested amounts of wood are transported to the delivery destinations. Also, the driver has real-time information on what is supposed to be delivered from where and to where.

CFLogistics (LogForce) is a software service for forestry related transport that streamlines the business for both the haulage contractor and the forestry company. CFLogistics software covers all the planning and vehicle software needed by a haulage contractor. With the help of the CFLogistics service, a transport company can offer its services to several forestry companies using one information system. The forestry company can focus on managing delivery volumes and optimising stock turnover. With the CFLogistics software service, the haulage contractor can plan and manage the transport of logs, forest energy, chips and other by-products of the forest industry from the starting depot to the location of use.

Advantages for transport companies:

- Higher utilisation rate of the transportation equipment
- Ability to work for different forestry companies using just one application
- More flexible transport planning
- Forestry companies advantages:
- Focus on managing delivery volumes
- Better stock turnover
- Cost-efficient logistics

DETALJER

VEDENS URSPRUNG

Skog

TRÄTYP

Rundvirke

TYP AV TRÄ

Stemwood

PÅVERKAN PÅ MILJÖ & BIOLOGISK MÅNGFALD

Medium

EKONOMISK EFFEKT

Positive

KOMMERSIELL POTENTIAL

--

NAV

Norra navet

EKONOMISK PÅVERKAN

Positive / more efficient working processes

SPECIFIKA KUNSKAPSBEHOV

IT-tool application knowledge is needed

MOBILISERINGSPOTENTIAL

Not possible to assess

HÅLLBARHETS POTENTIAL - VÄRDE

--

ENKEL IMPLEMENTERING

Easy

ENKEL IMPLEMENTERING - UTVÄRDERING

--

NYCKEL FÖRUTSÄTTNINGAR

Good communication is needed with all stakeholders

TYP AV EVENEMANG DÄR DENNA BPI HAR PRESENTERATS

--

EFFEKT ANTAL ANSTÄLLDA

Positive

KOSTNADER FÖR IMPLEMENTERING (EURO - €)

--

MER INFORMATION

UTMANING SOM ADRESSERAS

5. Förbättra ekonomisk och miljömässig prestanda för skogsförsörjningskedjor

DOMÄN

Avverkning, infrastruktur, logistik

TYPE AV LÖSNING

Samarbetsplattform, logistisk knutpunkt

NYCKELORD

--

DIGITAL LÖSNING

Ja

INNOVASION

Nej

UPPHOVSLAND

Finland

POTENTIAL

Nationell

START OCH SLUTÅR

--

KONTAKT INFORMATION

ÄGARE ELLER FÖRFATTARE

Trimble

RAPPORTÖR

<https://forestry.trimble.com/>

REFERENCES AND RESOURCES

HEMSIDA (HUVUDSIDA)

<https://www.logforce.fi/>

PROJEKTETS HEMSIDA

--

PROJEKTFERENS

--

RESURSER

CFLogistics



PROJEKT SOM DETTA FACTSHEET SKAPATS INOM

Rosewood

DATUM FÖR INLÄGG

17 sep 2019



[Link to Rosewood 4.0](#)



This project has received funding from the European Union's Horizon 2020 research and innovation programme under grant agreement No. 862681

A TOOL FROM ROSEWOOD 4.0, DESIGNED AND DEVELOPED BY

