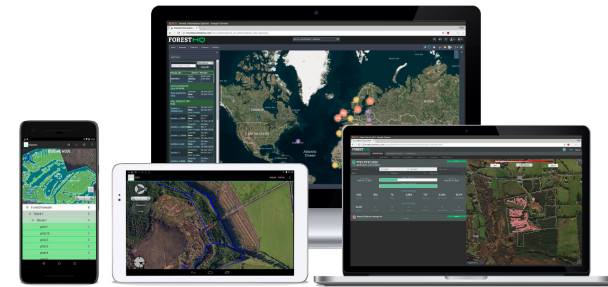


ForestHQ | Online system to manage land, inventories and operations



ForestHQ

ForestHQ is an innovative system supporting the management of forest operations and processes. This system includes tools for land management, data collection, data analysis, timber valuation, and activities management.

ForestHQ facilitates the management of forest operations and processes. This platform adds value to the data and improves the access and sharing of information. ForestHQ includes different key modules:

- **Forest inventory, valuation, and carbon MRV.** This module includes mobile apps for field data collection, models, and analytics to quantify timber products and carbon.
 - Rapid measurement with the Arboreal app (iOS) or traditional measurement tools.
 - Simple and automated analytics, carbon estimation, and forest valuation
 - Online mapping of inventories with location-based metrics
 - Online reporting including, timber product breakdown, digital maps, and valuation reports
 - Compatible with ForestBidder Online Marketplace
- **Remote harvesting monitoring.** This module includes a connection with harvester machines for remote monitoring of the harvesting operations. This tool increases the control of the operations and significantly reduces costs and field visits.
 - Manage harvesting contractors
 - Track harvest progress remotely
 - Monitor log product optimisation performance
 - Harvester products and stem locations for granular information and visual maps
 - HarvestSync App (android) for onboard data collection with auto-syncing
- **Land management.** ForestHQ makes it easy to manage your forest properties and activities. This is a collaborative platform that facilitates the visibility

of data and communications.

- Manage forest properties and client database
- Easily map forest sub-compartments online
- Plan and manage forest operations and activities
- Manage and track documents, felling licenses, permits, and grants
- Assign and share documents and tasks
- Integrate with your existing systems

Further modules will include tools for forest certification, carbon sequestration projects, and forest management plans.

ForestHQ can be customised and adapted to the different user needs, with simple user interfaces it is an ideal solution for forest owners, small and large organisations

DETALJER

VEDENS URSPRUNG

Skog

TRÄTYP

Rundvirke

TYP AV TRÄ

--

PÅVERKAN PÅ MILJÖ & BIOLOGISK MÅNGFALD

ForestHQ has a significant impact on the digitalisation of the forest industry. This system makes digitalisation more accessible to small and medium size forest owners and organisations. According to a study performed by UNECE, in terms of numbers of private forest owners as well as distributions of size classes, small-scale land holdings prevail in European forests. These forest owners are not only important in numbers or a large amount of forest that they manage, but also play an important role in rural communities, sustaining local economies and traditional and sustainable forest management methods.

Despite the effort that small forest owners are putting into sustainable forest management. The level of sustainable forest management that can be verified in the private forest need to improve. For the private forest sector, with the exception of Austria and Finland, the certification level is still rather low or even non-existent in some countries.

ForestHQ is a game-changer to bring private owners and organizations to

MOBILISERINGSPOTENTIAL

Using ForestHQ harvesting module the customer can mobilise up to 20% more of quality timber by a better optimisation of the harvesting.

HÅLLBARHETS POTENTIAL - VÄRDE

Mycket positiv

ENKEL IMPLEMENTERING

ForestHQ is mainly an online system that does not require implementation in the client side.

ENKEL IMPLEMENTERING - UTVÄRDERING

Very Easy

effective and variable forest management providing them with digitalisation.

EKONOMISK EFFEKT

--

KOMMERSIELL POTENTIAL

This system is targeting forest owners and forest management organisations worldwide.

NAV

--

EKONOMISK PåVERKAN

--

SPECIFIKA KUNSKAPSBEHÖV

There is no specific knowledge required to use ForestHQ

NYCKEL FÖRUTSÄTTNINGAR

There are no specific prerequisites to use ForestHQ

TYP AV EVENEMANG DÄR DENNA BPI HAR PRESENTERATS

--

EFFEKT ANTAL ANSTÄLLDA

--

KOSTNADER FÖR IMPLEMENTERING (EURO - €)

0

MER INFORMATION

UTMANING SOM ADRESSERAS

5. Förbättra ekonomisk och miljömässig prestanda för skogsförsörjningskedjor

DOMÄN

Inventering, värdering, övervakning
Skogsförvaltning, skogskjötsel, ekosystemtjänster
Avverkning, infrastruktur, logistik

TYPE AV LÖSNING

Data plattformar, data hubbs, open data

NYCKELORD

Inventory; Monitoring; Forest management;
Operations
mobile app; web app

DIGITAL LÖSNING

Ja

INNOVASION

Ja

UPPHOVSLAND

Irland

POTENTIAL

Gränsöverskridande/transnationell

START OCH SLUTÅR

2015 -

KONTAKT INFORMATION

ÄGARE ELLER FÖRFATTARE

Treemetrics

Enda Keane

ekeane@treemetrics.com

www.treemetrics.com

RAPPORTÖR

Treemetrics

Alex Poveda

jpoveda@treemetrics.com

REFERENCES AND RESOURCES

HEMSIDA (HUVUDSIDA)

<http://www.treemetrics.com>

PROJEKTETS HEMSIDA

<https://www.treemetrics.com/about/projects>

PROJEKTFERENS

ForestHQ

RESURSER

Forest Bidder

LOGO FÖR BEST PRACTICE

FORESTHQ

A cloud based forest management platform that offers full, realtime, centralised visibility and communications for all essential forestry processes

LOGO, HUVUDORGANISATION



PROJEKT SOM DETTA FACTSHEET SKAPATS INOM

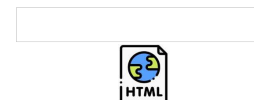
Rosewood 4.0

DATUM FÖR INLÄGG

14 dec 2021



This project has received funding from the European Union's Horizon 2020 research and innovation programme under grant agreement No. 862681



A TOOL FROM ROSEWOOD 4.0, DESIGNED AND DEVELOPED BY

