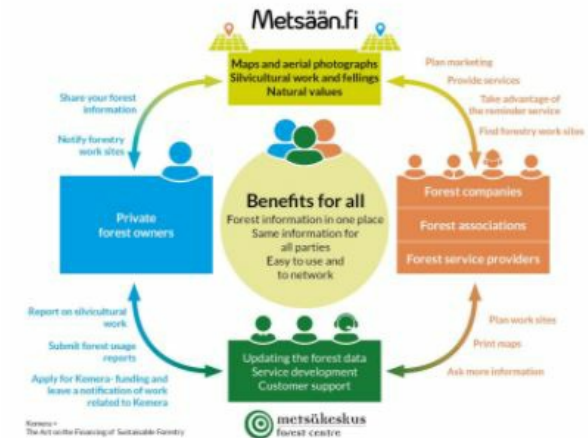


eServices for forest owners and service



Metsään.fi provides eServices for forest owners and forestry service providers. The online application shows the silvicultural possibilities of each forest estate and their compartments.

The Metsään.fi-service included in the Metsään.fi-website is a free e-service for forest owners and corporate actors (companies, associations and service providers) in the forest sector, which aim is to support active decision-making among forest owners by offering forest resource data and maps on forest properties, by making contacts with the authorities easier through online services and to act as a platform for offering forest services, among other things. In addition to the Metsään.fi-service, the website includes open forest data services that offer the users national forest resource data that is not linked with personal information. Metsään.fi is quite easy to use and it provides the forest owner many new flexible services. It is safe system because strong identification is needed. When you log in to

the Metsään.fi service, you will see all the forest holdings you own. You will also see the jointly owned forest holdings where you are a single shareholder. You have one place where you can take care of your forest affairs and plan the management of your forest assets. You will have free access to forest data and a transaction service collected with public funds.

DETALII

SURSA DE LEMN

--

TIPUL DE LEMN

--

TIPUL DE LEMN ÎN CAUZĂ

--

IMPACTUL ASUPRA MEDIULUI ȘI BIODIVERSITĂȚII

Very positive, shows the environmental values (habitats of special importance) in the compartments of the forest estate

EFFECT ASUPRA VENITURILOR

Positive, forest owners sell wood and services providers get income

POTENȚIAL DE EXPLOATARE

--

HUB

--

IMPACT ECONOMIC

Communication between forest owners and forestry service providers

CUNOȘȚINȚE SPECIFICE NECESARE

POTENȚIALUL DE MOBILIZARE

--

POTENȚIAL DE SUSTENABILITATE - VALOARE

--

FACILITATEA DE IMPLEMENTARE

--

FACILITATEA DE IMPLEMENTARE - EVALUARE

Ușor

CONDIȚII CHEIE PREALABILE

--

TIPUL DE EVENIMENT LA CARE A FOST PREZENTAT ACEST IPB

--

EFFECT ASUPRA LOCURILOR DE MUNCĂ

Positive, new jobs for service providers

COSTURI PENTRU IMPLEMENTARE (EURO - €)

--

Not any specific knowledge needed

MAI MULTE DETALII

PROVOCARE ABORDATĂ

--

DOMAIN

Inventariere, evaluare, monitorizare
Managementul pădurilor, silvicultura, servicii
ecosistemice, reziliență

TIP DE SOLUȚIE

Instrumente de consiliere și servicii pentru
proprietarii de păduri

CUVINTE CHEIE

virtual tool

3D

SOLUȚIE DIGITALĂ

Da

INOVAȚIE

Nu

ȚARA DE ORIGINE

--

SCARA DE APLICARE

Național

ANUL DE ÎNCEPUT ȘI DE SFÂRȘIT

2012 -

DATE DE CONTACT

PROPRIETAR SAU AUTOR

Finnish Forestry Center

Minttu Koponen

minttu.koponen@metsakeskus.fi

<https://www.metsakeskus.fi/en>

REPORTER

Lapland University of Applied Sciences

Merja Laajanen

merja.laajanen@lapinamk.fi

REFERENCES AND RESOURCES

PAGINĂ WEB

<https://www.metsakeskus.fi/fi/asiointi/metsaanfi>

RESURSE

WEBSITE PROJECT

--

REFERINȚĂ PROIECT

--

PROIECTUL ÎN CADRUL CĂRUIA A FOST CREATĂ ACEASTĂ FIȘĂ INFORMATIVĂ

Rosewood 4.0

DATA POSTĂRII

12 Aug 2021



This project has received funding from the European Union's Horizon 2020 research and innovation programme under grant agreement No. 862681



A TOOL FROM ROSEWOOD 4.0, DESIGNED AND DEVELOPED BY

