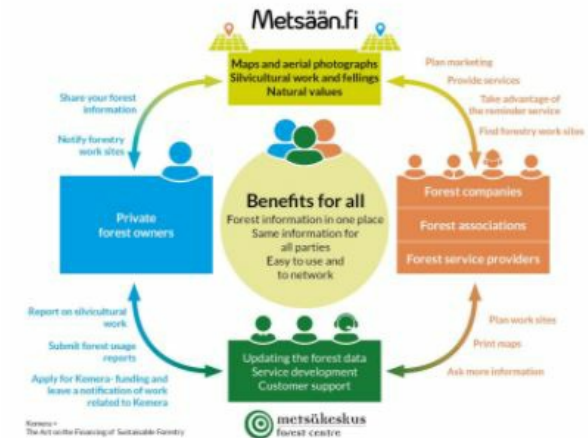


eServices for forest owners and service



Metsään.fi provides eServices for forest owners and forestry service providers. The online application shows the silvicultural possibilities of each forest estate and their compartments.

The Metsään.fi-service included in the Metsään.fi-website is a free e-service for forest owners and corporate actors (companies, associations and service providers) in the forest sector, which aim is to support active decision-making among forest owners by offering forest resource data and maps on forest properties, by making contacts with the authorities easier through online services and to act as a platform for offering forest services, among other things. In addition to the Metsään.fi-service, the website includes open forest data services that offer the users national forest resource data that is not linked with personal information. Metsään.fi is quite easy to use and it provides the forest owner many new flexible services. It is safe system because strong identification is needed. When you log in to

the Metsään.fi service, you will see all the forest holdings you own. You will also see the jointly owned forest holdings where you are a single shareholder. You have one place where you can take care of your forest affairs and plan the management of your forest assets. You will have free access to forest data and a transaction service collected with public funds.

DETALHES

ORIGEM DA MADEIRA

--

TIPO DE MADEIRA

--

TIPO DE MADEIRA EM CAUSA

--

IMPACTE NO AMBIENTE E BIODIVERSIDADE

Very positive, shows the environmental values (habitats of special importance) in the compartments of the forest estate

IMPACTE NAS RECEITAS

Positive, forest owners sell wood and services providers get income

POTENCIAL DE EXPLORAÇÃO

--

HUB

--

IMPACTE ECONOMICO

Communication between forest owners and forestry service providers

CONHECIMENTOS ESPECIFICOS NECESSÁRIOS

POTENCIAL DE MOBILIZAÇÃO

--

SUSTENTABILIDADE POTENCIAL - VALOR

--

FACILIDADE DE IMPLEMENTAÇÃO

--

FACILIDADE DE IMPLEMENTAÇÃO

Fácil

PRE-REQUISITOS CHAVE

--

TIPO DE EVENTO EM QUE ESTE BPI TEM SIDO APRESENTADO

--

IMPACTE NO EMPREGO

Positive, new jobs for service providers

CUSTOS DE IMPLEMENTAÇÃO (EURO - EUR)

--

Not any specific knowledge needed

MAIS DETALHES

DESAFIO ABORDADO

--

DOMÍNIO

Inventário, avaliação e monitorização
Gestão florestal, silvicultura, serviços do
ecossistema, resiliência

TIPO DE SOLUÇÃO

Ferramentas de consultoria e prestação de serviços
a proprietários florestais

PALAVRAS-CHAVE

virtual tool

3D

SOLUÇÃO DIGITAL

Sim

INOVAÇÃO

Não

PAÍS DE ORIGEM

--

ESCALA DE APLICAÇÃO

Nacional

ANO DE INÍCIO E FIM

2012 -

DADOS DE CONTACTO

PROPRIETÁRIO OU AUTOR

Finnish Forestry Center

Minttu Koponen

minttu.koponen@metsakeskus.fi

<https://www.metsakeskus.fi/en>

REPÓRTER

Lapland University of Applied Sciences

Merja Laajanen

merja.laajanen@lapinamk.fi

REFERENCES AND RESOURCES

WEBSITE PRINCIPAL

<https://www.metsakeskus.fi/fi/asiointi/metsaanfi>

WEBSITE DO PROJETO

--

REFERÊNCIA AO PROJETO

--

RECURSOS

PROJETO NO ÂMBITO DO QUAL A FOLHA DE DIVULGAÇÃO FOI CRIADA

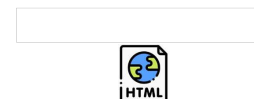
Rosewood 4.0

DATA DE ENTRADA

12 Ago 2021



This project has received funding from the European Union's Horizon
2020 research and innovation programme under grant agreement No.
862681



A TOOL FROM ROSEWOOD 4.0, DESIGNED AND DEVELOPED BY

