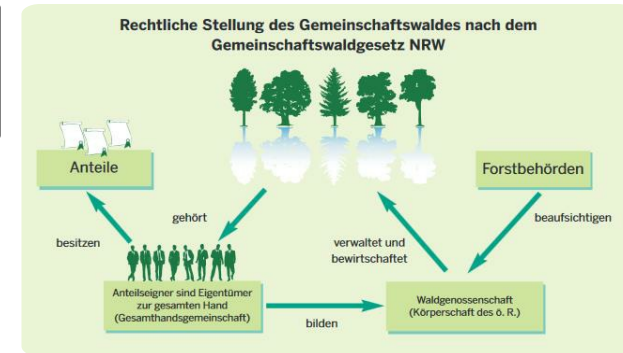


# Community forests in NRW and legal framework



The ownership of the forests is shared by the stockholders as an historically rooted legal framework. Due to different backgrounds in formation, there is no relation between the size of community forests and the number of stockholders.

The four cornerstones of the community forest law from 1975 are:

All stockholders are part of a public corporation, the forest cooperative

It is forbidden to dissolve forest areas which are part of a community forest

Consistent management policies for all kinds of community forests

The possibility to merge forest cooperatives or create new ones

For the creation of the community forest law in 1975, an advisory board with participants from all existing forms of community forests was formed. Because of this involvement the framework is well accepted and has proved its practicability. Since the implementation of the community forest law until 2002 only two new forest cooperatives have been founded. It is not easy to convince private forest owners to make this step

There are several advantages of community forests compared to small private forests:

a chairman can decide for all members how to manage the forest, especially after calamities such as a storm

merger of forest cooperatives and newly founded cooperatives improve the forest ownership structure

## DETALJER

---

### OPPRINNELSE FOR TRE

Skog

### TYPE TRE

Tre fra rundtvirke

### TYPE TRE INVOLVERT

Stemwood

### PÅVIRKNING PÅ MILJØ OG BIOLOGISK MANGFOLD

Positive - depending on management decisions

### INNETKTSEFFEKT

Positive

### UTNYTTELSESPOTENSIAL

--

### HUB

--

### ØKONOMISK PÅVIRKNING

Estimated up to 50€/ ha

### SPESIFIKKE KUNNSKAPSBEHOV

### MOBILISERINGSPOTENSIAL

1 - 2 m<sup>3</sup>/ha in region of NRW

### BÆREKRAFTPOTENSIAL - VERDI

--

### ENKEL IMPLEMENTERING

high

### ENKEL IMPLEMENTERING - EVALUERING

--

### VIKTIGE FORUTSETNINGER

Regional ownership structures and legal frameworks need to be suitable; participation processes needed in the implementation

### TYPE BEGIVENHET DER DENNE BPI HAR BLITT OMTALT

--

### EFFEKT PÅ ARBEIDSPLASSE

More efficient forest operations and thinnings possible with higher forest work force

### KOSTNADER MED IMPLEMENTERING (EURO - €)

--

Medium; need for specific regional structure knowledge and also administrative expertise

## MER INFORMASJON

---

### UTFORDRING ADRESSERT

--

### NØKKEWORD

--

### OPPRINELSESLAND

Tyskland

### DOMENE

Eierskap, samarbeid

### DIGITAL LØSNING

Nei

### POTENSIALE

Regional/deler av landet

### TYPE LØSNING

--

### INNOVASJON

Nei

### START OG SLUTT ÅR

--

## REFERENCES AND RESOURCES

---

### HJEMMESIDE (HOVEDSIDE)

[https://recht.nrw.de/lmi/owa/br\\_bes\\_detail](https://recht.nrw.de/lmi/owa/br_bes_detail)

### PROSJEKTETS HJEMMESIDE

--

### REFERANSE TIL PROSJEKT

--

### RESSURSER

--

---

PROSJEKT SOM DETTE FAKTAARKET ER OPPRETTET UNDER

Rosewood

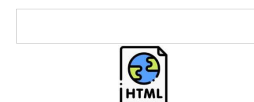
INNLEGGSDATO

15 nov 2019

---



This project has received funding from the European Union's Horizon  
2020 research and innovation programme under grant agreement No.  
862681



---

A TOOL FROM ROSEWOOD 4.0, DESIGNED AND DEVELOPED BY

