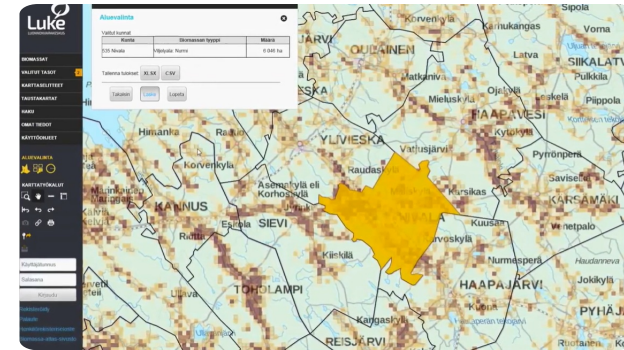


Biomass Atlas | Web-based forest resource map service



Biomass Atlas is an open service which collects the location data of biomasses under one, single user interphase. Developed by Luke together with Finnish organizations SYKE, TAPIO, UEF and UVA, and by the funding of the Finnish Ministry of Agriculture and Forestry, the service enables calculations of the amount of biomass in a given geographical area, as well as examining the opportunities and restrictions to utilise the biomass.

The map user interface is easy to use and allows user to watch, analyse and report biomasses from forestry, agriculture and biodegradable wastes from communities and industry. You will find approximately 300 map layers of different biomass types or land use categories in map user interface.

Based on Biomass Atlas, assessments of regional availability of biomass, procurement and logistical costs of biomass, procurement technology and optimization in Luke and other organizations have been successfully accomplished. Analyses of content of biomasses, their nutrients, energy potential, and the nutrient recycling have been optimized regionally using Biomass Atlas.

The potential to utilize biomass regionally can be assessed with focus in employment, regional economy or environmental impact. It is also possible to make scenarios, how these things will develop in the future.

The biomass data is planned to support investment decisions and sustainable use of natural resources, for example, and to help decision-makers to do sustainable energy politics. At the moment Biomass Atlas is available in Finnish. International version of Biomass Atlas will be built in cooperation with Baltic Forbio project, which starts at autumn 2017 and exports the Biomass Atlas concept to Sweden and Baltic sea countries. In Biomass Atlas you will find GIS data and maps of different biomass and land use types:

- multisource national forest inventory data describes biomass that is growing in forests
- forest chip potential
- field and crop areas
- crops and crop side streams
- manure of production animals

- biowaste from communities
- biodegradable waste from companies in scale that requires environmental authorization (VAHTI-database).

Field area, crops and waste data is updated yearly. Manure data is updated when needed, and forest data approximately in every five years. All the data in Biomass Atlas is described also in Finnish metadataportal for geodata, Paikkatietohakemisto.

DETALJER

OPPRINNELSE FOR TRE

Skog

TYPE TRE

Tre fra rundtvirke

MOBILISERINGSPOTENSIAL

Not possible to assess.

BæREKRAFTPOTENSIAL - VERDI

--

TYPE TRE INVOLVERT

Stemwood; Above and below ground woody biomass

ENKEL IMPLEMENTERING

Medium, IT skills needed

PåVIRKNING På MILJØ OG BIOLOGISK MANGFOLD

Medium

ENKEL IMPLEMENTERING - EVALUERING

--

INNTEKTSEFFEKT

Positive, Atlas can be used in planning processes of different organizations including companies

VIKTIGE FORUTSETNINGER

Web pages, see above.

UTNYTTELSESPOTENSIAL

--

TYPE BEGIVENHET DER DENNE BPI HAR BLITT OMTALT

--

HUB

Northern Hub

EFFEKT På ARBEIDSPLASSER

Positive, Atlas can be used in planning processes of different organizations including companies

ØKONOMISK PåVIRKNING

Positive, Atlas can be used in planning processes of different organizations including companies

KOSTNADER MED IMPLEMENTERING (EURO - €)

--

SPESIFIKKE KUNNSKAPSBEHOV

IT skills

MER INFORMASJON

UTFORDRING ADRESSERT

5. Forbedre den økonomiske og miljømessige ytelsen i skogbrukets forsynings kjede

NØKKEWORD

--

OPPRINSESLAND

Finland

DOMENE

Skogforvaltning, skogskjøtsel, økosystemtjenester

DIGITAL LØSNING

Ja

POTENSIALE

Nasjonal

TYPE LØSNING

Data plattformer og tilsvarende

INNOVASJON

Nei

START OG SLUTT ÅR

2017 -

KONTAKT INFORMASJON

EIER ELLER FORFATTER

Natural Resources Institute Finland (Luke)

Eeva Lehtonen

eeva.lehtonen@luke.fi

<https://www.luke.fi/en/>

RAPPORTØR

REFERENCES AND RESOURCES

HJEMMESIDE (HOVEDSIDE)

<https://www.luke.fi/biomassa-atlas/en/>

PROSJEKTETS HJEMMESIDE

--

REFERANSE TIL PROSJEKT

--

RESSURSER

--

LOGO FOR BESTE PRAKSIS

LOGO FOR HOVEDORGANISASJON



PROSJEKT SOM DETTE FAKTAARKET ER OPPRETTET UNDER

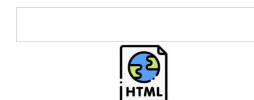
Rosewood

INNLEGGSDATO

17 sep 2019



This project has received funding from the European Union's Horizon
2020 research and innovation programme under grant agreement No.
862681



A TOOL FROM ROSEWOOD 4.0, DESIGNED AND DEVELOPED BY

