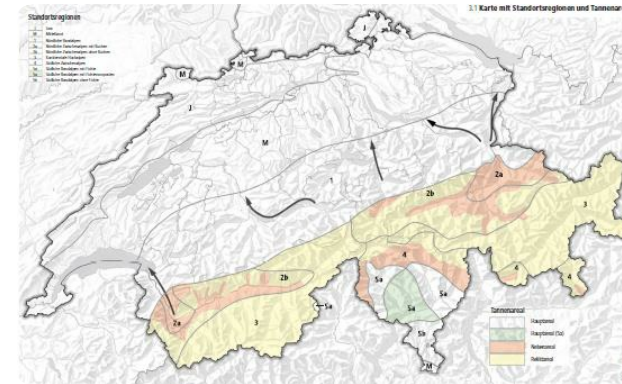


Sustainability and success control for protecting forest's



A practical tool intended to guarantee the survival of a sustainable and effective protective forest at a minimum cost. Based on the assumption that the state of the forest is crucial to its ability to provide effective protection against natural hazards, silvicultural requirement profiles are described for different forest locations and natural hazards. This method gives an overview for every protection forest type, helps to clarify the management goal and shows the achieved management results. It makes them verifiable and simplifies the discussion in the field of protective forest management for practitioners, authorities and academic staff. Standard method to characterize protection forest's needs and to manage them according to identical objective criteria. The management results are verifiable for the protection forest authorities. This method is used to improve the quality in protection forest management.

DETALJER

OPPRINNELSE FOR TRE

Skog

TYPE TRE

Tre fra rundtvirke

TYPE TRE INVOLVERT

Stemwood

PÅVIRKNING PÅ MILJØ OG BIOLOGISK MANGFOLD

Easy

INNTEKTSEFFEKT

Positive

UTNYTTELSESPOTENSIAL

--

HUB

--

ØKONOMISK PÅVIRKNING

Positive

SPESIFIKKE KUNNSKAPSBEHOV

MOBILISERINGSPOTENSIAL

- 10 m³/ha

BÆREKRAFTPOTENSIAL - VERDI

--

ENKEL IMPLEMENTERING

--

ENKEL IMPLEMENTERING - EVALUERING

--

VIKTIGE FORUTSETNINGER

Silvicultural knowledge

TYPE BEGIVENHET DER DENNE BPI HAR BLITT OMTALT

--

EFFEKT PÅ ARBEIDSPLASSER

Positive

KOSTNADER MED IMPLEMENTERING (EURO - €)

--

**MER
INFORMASJON**

UTFORDRING ADRESSERT

--

NØKKEWORD

--

OPPRINELSESLAND

Sveits

DOMENE

Skogforvaltning, skogskjøtsel, økosystemtjenester

DIGITAL LØSNING

Nei

POTENSIALE

Nasjonal

TYPE LØSNING

--

INNOVASJON

Nei

START OG SLUTT ÅR

2005 - 2005

**KONTAKT
INFORMASJON**

EIER ELLER FORFATTER

RAPPORTØR

info@bafu.admin.ch

**REFERENCES
AND RESOURCES**

HJEMMESIDE (HOVEDSIDE)

<https://www.bafu.admin.ch/bafu/en/home/topics/forest/publications-studies/publications/nachhaltigkeit-und-erfolgskontrolle-im-schutzwald.html>

PROSJEKTETS HJEMMESIDE

--

REFERANSE TIL PROSJEKT

--

RESSURSER

--

PROSJEKT SOM DETTE FAKTAARKET ER OPPRETTET UNDER

Rosewood

INNLEGGSDATO

16 sep 2019



Link to Rosewood 4.0



This project has received funding from the European Union's Horizon 2020 research and innovation programme under grant agreement No. 862681

A TOOL FROM ROSEWOOD 4.0, DESIGNED AND DEVELOPED BY



□