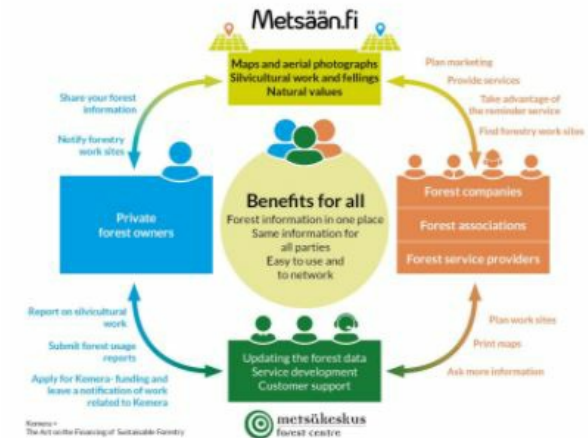


eServices for forest owners and service



Metsään.fi provides eServices for forest owners and forestry service providers. The online application shows the silvicultural possibilities of each forest estate and their compartments.

The Metsään.fi-service included in the Metsään.fi-website is a free e-service for forest owners and corporate actors (companies, associations and service providers) in the forest sector, which aim is to support active decision-making among forest owners by offering forest resource data and maps on forest properties, by making contacts with the authorities easier through online services and to act as a platform for offering forest services, among other things. In addition to the Metsään.fi-service, the website includes open forest data services that offer the users national forest resource data that is not linked with personal information. Metsään.fi is quite easy to use and it provides the forest owner many new flexible services. It is safe system because strong identification is needed. When you log in to

the Metsään.fi service, you will see all the forest holdings you own. You will also see the jointly owned forest holdings where you are a single shareholder. You have one place where you can take care of your forest affairs and plan the management of your forest assets. You will have free access to forest data and a transaction service collected with public funds.

DETALJER

OPPRINNELSE FOR TRE

--

TYPE TRE

--

TYPE TRE INVOLVERT

--

PÅVIRKNING PÅ MILJØ OG BIOLOGISK MANGFOLD

Very positive, shows the environmental values (habitats of special importance) in the compartments of the forest estate

INNTEKTSEFFEKT

Positive, forest owners sell wood and services providers get income

UTNYTTELSESPOTENSIAL

--

HUB

--

ØKONOMISK PÅVIRKNING

Communication between forest owners and forestry service providers

SPESIFIKKE KUNNSKAPSBEHOV

MOBILISERINGSPOTENSIAL

--

BÆREKRAFTPOTENSIAL - VERDI

--

ENKEL IMPLEMENTERING

--

ENKEL IMPLEMENTERING - EVALUERING

Lett

VIKTIGE FORUTSETNINGER

--

TYPE BEGIVENHET DER DENNE BPI HAR BLITT OMTALT

--

EFFEKT PÅ ARBEIDSPLASSER

Positive, new jobs for service providers

KOSTNADER MED IMPLEMENTERING (EURO - €)

--

Not any specific knowledge needed

MER INFORMASJON

UTFORDRING ADRESSERT

--

DOMENE

Inventering, vurdering, overvåking

Skogforvaltning, skogskjøtsel, økosystemtjenester

TYPE LØSNING

Rådgivnings- og serviceverktøy for skogeiere

NØKKEWORD

virtual tool

3D

DIGITAL LØSNING

Ja

INNOVASJON

Nei

OPPRINSELSLAND

--

POTENSIALE

Nasjonal

START OG SLUTT ÅR

2012 -

KONTAKT INFORMASJON

EIER ELLER FORFATTER

Finnish Forestry Center

Minttu Koponen

minttu.koponen@metsakeskus.fi

<https://www.metsakeskus.fi/en>

RAPPORTØR

Lapland University of Applied Sciences

Merja Laajanen

merja.laajanen@lapinamk.fi

REFERENCES AND RESOURCES

HJEMMESIDE (HOVEDSIDE)

<https://www.metsakeskus.fi/fi/asiointi/metsaanfi>

PROSJEKTETS HJEMMESIDE

--

REFERANSE TIL PROSJEKT

--

RESSURSER

PROSJEKT SOM DETTE FAKTAARKET ER OPPRETTET UNDER
Rosewood 4.0

INNLEGGSDATO
12 aug 2021



This project has received funding from the European Union's Horizon
2020 research and innovation programme under grant agreement No.
862681



A TOOL FROM ROSEWOOD 4.0, DESIGNED AND DEVELOPED BY

