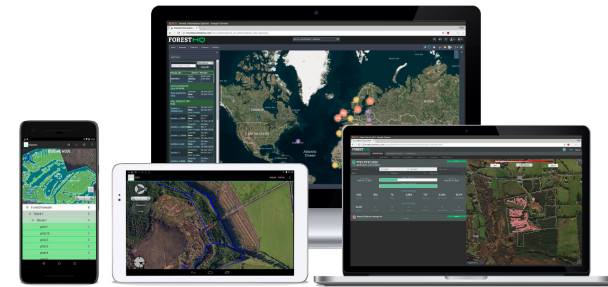


ForestHQ | Online system to manage land, inventories and operations



ForestHQ

ForestHQ is an innovative system supporting the management of forest operations and processes. This system includes tools for land management, data collection, data analysis, timber valuation, and activities management.

ForestHQ facilitates the management of forest operations and processes. This platform adds value to the data and improves the access and sharing of information. ForestHQ includes different key modules:

- **Forest inventory, valuation, and carbon MRV.** This module includes mobile apps for field data collection, models, and analytics to quantify timber products and carbon.
 - Rapid measurement with the Arboreal app (iOS) or traditional measurement tools.
 - Simple and automated analytics, carbon estimation, and forest valuation
 - Online mapping of inventories with location-based metrics
 - Online reporting including, timber product breakdown, digital maps, and valuation reports
 - Compatible with ForestBidder Online Marketplace
- **Remote harvesting monitoring.** This module includes a connection with harvester machines for remote monitoring of the harvesting operations. This tool increases the control of the operations and significantly reduces costs and field visits.
 - Manage harvesting contractors
 - Track harvest progress remotely
 - Monitor log product optimisation performance
 - Harvester products and stem locations for granular information and visual maps
 - HarvestSync App (android) for onboard data collection with auto-syncing
- **Land management.** ForestHQ makes it easy to manage your forest properties and activities. This is a collaborative platform that facilitates the visibility

of data and communications.

- Manage forest properties and client database
- Easily map forest sub-compartments online
- Plan and manage forest operations and activities
- Manage and track documents, felling licenses, permits, and grants
- Assign and share documents and tasks
- Integrate with your existing systems

Further modules will include tools for forest certification, carbon sequestration projects, and forest management plans.

ForestHQ can be customised and adapted to the different user needs, with simple user interfaces it is an ideal solution for forest owners, small and large organisations

DETTAGLI

ORIGINE DEL LEGNO

foresta

TIPO DI LEGNO

Fusto

TIPO DI LEGNO IN QUESTIONE

--

IMPATTO SULL'AMBIENTE E LA BIODIVERSITÀ

ForestHQ has a significant impact on the digitalisation of the forest industry. This system makes digitalisation more accessible to small and medium size forest owners and organisations. According to a study performed by UNECE, in terms of numbers of private forest owners as well as distributions of size classes, small-scale land holdings prevail in European forests. These forest owners are not only important in numbers or a large amount of forest that they manage, but also play an important role in rural communities, sustaining local economies and traditional and sustainable forest management methods.

Despite the effort that small forest owners are putting into sustainable forest management. The level of sustainable forest management that can be verified in the private forest need to improve. For the private forest sector, with the exception of Austria and Finland, the certification level is still rather low or even non-existent in some countries.

ForestHQ is a game-changer to bring private owners and organizations to

POTENZIALE DI MOBILITAZIONE

Using ForestHQ harvesting module the customer can mobilise up to 20% more of quality timber by a better optimisation of the harvesting.

POTENZIALE SOSTENIBILITÀ - VALORE

Molto positivo

FACILITÀ DI IMPLEMENTAZIONE

ForestHQ is mainly an online system that does not require implementation in the client side.

FACILITÀ DI IMPLEMENTAZIONE - VALUTAZIONE

Very Easy

effective and variable forest management providing them with digitalisation.

EFFETTO SUL REDDITO

--

POTENZIALE DI SFRUTTAMENTO

This system is targeting forest owners and forest management organisations worldwide.

HUB

--

IMPATTO ECONOMICO

--

CONOSCENZE SPECIFICHE NECESSARIE

There is no specific knowledge required to use ForestHQ

PREREQUISITI CHIAVE

There are no specific prerequisites to use ForestHQ

TIPO DI EVENTO IN CUI QUESTO BPI è STATO PRESENTATO

--

EFFETTO SUL LAVORO

--

I COSTI DI ATTUAZIONE (EURO - €)

0

PIÙ DETTAGLI

SFIDA RISOLTA

5. Migliorare le prestazioni economiche e ambientali delle filiere forestali

DOMINIO

Inventario, la valutazione, il monitoraggio
La gestione forestale, selvicoltura, i servizi
ecosistemici, resilienza
La raccolta, le infrastrutture, la logistica

TIPO DI SOLUZIONE

piattaforme di dati, hub di dati, dati aperti

PAROLE CHIAVE

Inventory; Monitoring; Forest management;
Operations
mobile app; web app

SOLUZIONE DIGITALE

Sì

INNOVAZIONE

Sì

PAESE D'ORIGINE

Irlanda

SCALA DI APPLICAZIONE

Transfrontaliera / multilaterale

INIZIO E FINE ANNO

2015 -

CONTATTI

PROPRIETARIO O AUTORE

Treemetrics
Enda Keane
ekeane@treemetrics.com
www.treemetrics.com

REPORTER

Treemetrics
Alex Poveda
jpoveda@treemetrics.com

REFERENCES AND RESOURCES

SITO PRINCIPALE

<http://www.treemetrics.com>

SITO WEB DEL PROGETTO

<https://www.treemetrics.com/about/projects>

PROGETTO DI RIFERIMENTO

RISORSE

Forest Bidder

FORESTHQ

A cloud based forest management platform that offers full, realtime, centralised visibility and communications for all essential forestry processes



PROGETTO NELL'AMBITO DEL QUALE QUESTA SCHEDA è STATA CREATA

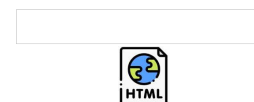
Rosewood 4.0

DATA DI INSERIMENTO

14 Dic 2021



This project has received funding from the European Union's Horizon 2020 research and innovation programme under grant agreement No. 862681



A TOOL FROM ROSEWOOD 4.0, DESIGNED AND DEVELOPED BY

