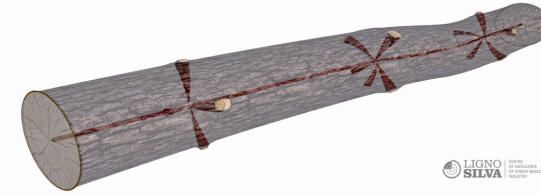


LignoSilva INFRA | Innovative forestry research centre with 3D CT scanner technology



LignoSilva INFRA

LignoSilva is Centre of Excellence of the National Forest Centre in cooperation with the Pulp and Paper Institute with a focus on research and innovation in the field of production, mechanical and chemical processing and use wood utilization, strongly committed to demonstrate innovative digitalization technologies.

Based on scientific excellence, outstanding infrastructure, research synergy and cooperation with decision makers and business establishment of the Centre of Excellence of European significance in the field of forestry, wood processing, pulp and paper in cooperation with leading research organisations in the EU. Through implementation of unique infrastructure (3D CT scanner) CoE LignoSilva focus on the innovation development with companies in the field of wood production, processing and utilisation and to contribute to their development and innovation activities related to multi-purpose management of forests; enhanced biomass production; secured wood supply, forest operations and logistics; cascade use, reuse and recycling systems of wood and energy from wood. The fundamental innovative impulse for higher utilization of wood raw material is the implementation of:

- technologies of ground mobile laser scanning for qualitative inventory - assortment of stands.
- 3D CT scanner for the detection of quality and errors of wood and the subsequent use of the obtained data in the field of optimization of sorting and sawmill wood processing.

In the field of pulp and paper processing, CoE's research and innovation activities focus on replacing plastics with biodegradable and compostable packaging based on paper, cardboard and paperboard with special surface treatments.

VIŠE DETALJA

IZAZOV

2. Unaprjeđenje infrastrukture i kapaciteta javnih dionika

KLJUČNE RIJEČI

--

ZEMLJA PODRIJETLA

Slovačka

DOMENA

Industrije utemeljene na šumama, bio / kružna ekonomija

DIGITALNO RJEŠENJE

Da

PODRUČJE PRIMJENE

Nacionalna

VRSTA RJEŠENJA

Mreže, površine za ispitivanje, platforme za istraživanje i razvoj

INOVACIJA

Da

POČETAK I KRAJ GODINE

2014 -

KONTAKT PODATCI

VLASNIK ILI AUTOR

National Forest Centre – Forest Research Institute

Tomáš Bucha

tomas.bucha@nlcsk.org

<http://lignosilva.nlcsk.org/>

IZVJESTITELJ

REFERENCES AND RESOURCES

GLAVNA WEB STRANICA

<http://lignosilva.nlcsk.org/>

WEB STRANICA PROJEKTA

<https://cordis.europa.eu/project/id/664557>

REFERENCA PROJEKTA

LignoSilva Centre of Excellence, Horizon 2020 no. 664557

IZVORI

--

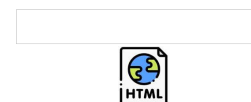


PROJEKT U OKVIRU KOJEG JE INFORMATIVNI LIST KREIRAN

Rosewood 4.0

DATUM UNOSA

11 kol 2021



This project has received funding from the European Union's Horizon
2020 research and innovation programme under grant agreement No.
862681

A TOOL FROM ROSEWOOD 4.0, DESIGNED AND DEVELOPED BY

