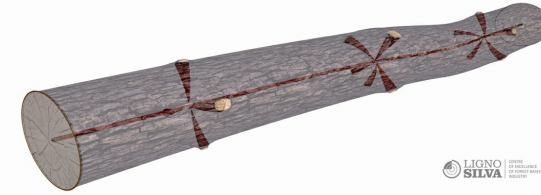


LignoSilva INFRA | Innovative forestry research centre with 3D CT scanner technology



LignoSilva INFRA

LignoSilva is Centre of Excellence of the National Forest Centre in cooperation with the Pulp and Paper Institute with a focus on research and innovation in the field of production, mechanical and chemical processing and use wood utilization, strongly committed to demonstrate innovative digitalization technologies.

Based on scientific excellence, outstanding infrastructure, research synergy and cooperation with decision makers and business establishment of the Centre of Excellence of European significance in the field of forestry, wood processing, pulp and paper in cooperation with leading research organisations in the EU. Through implementation of unique infrastructure (3D CT scanner) CoE LignoSilva focus on the innovation development with companies in the field of wood production, processing and utilisation and to contribute to their development and innovation activities related to multi-purpose management of forests; enhanced biomass production; secured wood supply, forest operations and logistics; cascade use, reuse and recycling systems of wood and energy from wood. The fundamental innovative impulse for higher utilization of wood raw material is the implementation of:

- technologies of ground mobile laser scanning for qualitative inventory - assortment of stands.
- 3D CT scanner for the detection of quality and errors of wood and the subsequent use of the obtained data in the field of optimization of sorting and sawmill wood processing.

In the field of pulp and paper processing, CoE's research and innovation activities focus on replacing plastics with biodegradable and compostable packaging based on paper, cardboard and paperboard with special surface treatments.

MORE DETAILS

CHALLENGE ADDRESSED

2.- Improve infrastructures and capacity of public actors

KEYWORDS

--

COUNTRY OF ORIGIN

Slovakia

DOMAIN

Forest-based bio/circular economy

DIGITAL SOLUTION

Yes

SCALE OF APPLICATION

National

TYPE OF SOLUTION

Networks, testbeds, R&D platforms

INNOVATION

Yes

START AND END YEAR

2014 -

CONTACT DATA

OWNER OR AUTHOR

National Forest Centre – Forest Research Institute

Tomáš Bucha

tomas.bucha@nlcsk.org

<http://lignosilva.nlcsk.org/>

REPORTER

REFERENCES AND RESOURCES

MAIN WEBSITE

<http://lignosilva.nlcsk.org/>

PROJECT WEBSITE

<https://cordis.europa.eu/project/id/664557>

PROJECT REFERENCE

LignoSilva Centre of Excellence, Horizon 2020 no. 664557

RESOURCES

--

LOGO OF BEST
PRACTICE

LOGO OF MAIN ORGANIZATION

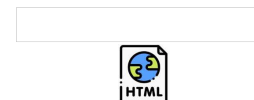


PROJECT UNDER WHICH THIS FACTSHEET HAS BEEN CREATED

Rosewood 4.0

POST DATE

11 Aug 2021



This project has received funding from the European Union's Horizon
2020 research and innovation programme under grant agreement No.
862681

A TOOL FROM ROSEWOOD 4.0, DESIGNED AND DEVELOPED BY

