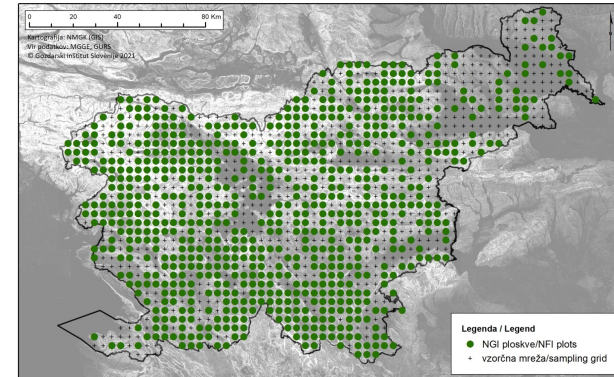


National Forestry Inventory



NFI

Monitoring of state and development of Slovenian forests

Within National Forest Inventory (NFI) forests of Slovenia are monitored and measured. NFI provides extensive and in depth survey of all slovenia forests, including informations about composition, condition, distribution and size of our forests. It is of great importance for monitoring changes of forests through time, for developing suitable policy measures and for further support of sustainable management of forests. The basis for the inventory is a systematic sample of plots on a 4km x 4km grid. The selection of inventory plots is based on the use of lidar and aerial images. With their help, plots that are not located in the forest are eliminated, and they are also helpful in assesment of forests at inaccessible plots. A special data acquisition application was developed for the purpose of field inventory. This guides the enumerator through the inventory process, and at the same time the data is already digitized and ready for further processing. The application is also connected to a GPE device, which allows the precise determination of the sampling point.

DETAILS

ORIGIN OF WOOD

--

TYPE OF WOOD

--

KIND OF WOOD CONCERNED

--

IMPACT ON ENVIRONMENT & BIODIVERSITY

--

INCOME EFFECT

--

EXPLOITATION POTENTIAL

--

HUB

South-East Hub

ECONOMIC IMPACT

--

SPECIFIC KNOWLEDGE NEEDED

--

MOBILIZATION POTENTIAL

--

SUSTAINABILITY POTENTIAL - VALUE

--

EASE OF IMPLEMENTATION

--

EASE OF IMPLEMENTATION - EVALUATION

--

KEY PREREQUISITES

--

TYPE OF EVENT WHERE THIS BPI HAS BEEN FEATURED

--

JOB EFFECT

--

COSTS OF IMPLEMENTATION (EURO - €)

--

MORE DETAILS

CHALLENGE ADDRESSED

7.- Raise public awareness, social acceptance and political support for forestry

KEYWORDS

--

COUNTRY OF ORIGIN

Slovenia

DOMAIN

Forest management, ecosystem, resilience
Forest disturbances, risks

DIGITAL SOLUTION

Yes

SCALE OF APPLICATION

National

TYPE OF SOLUTION

Design software

INNOVATION

Yes

START AND END YEAR

2000 -

CONTACT DATA

OWNER OR AUTHOR

Slovenian Forestry Institute

Mitja Skudnik

mitja.skudnik@gozdis.si

<https://www.gozdis.si/oddelek-za-nacrtovanje-in-monitoring-gozdov-in-krajine/>

REPORTER

Slovenian Forestry Institute

Polona Hafner

polona.hafner@gozdis.si

REFERENCES AND RESOURCES

MAIN WEBSITE

https://www.gozdis.si/Nacionalna-gozdna-inventura_1/

PROJECT WEBSITE

--

PROJECT REFERENCE

<https://dirros.openscience.si/lzpisGradiva.php?id=14428&lang=eng>

RESOURCES

--

LOGO OF BEST PRACTICE



LOGO OF MAIN ORGANIZATION

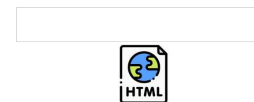


PROJECT UNDER WHICH THIS FACTSHEET HAS BEEN CREATED

Rosewood 4.0

POST DATE

14 Sep 2021



This project has received funding from the European Union's Horizon 2020 research and innovation programme under grant agreement No. 862681

A TOOL FROM ROSEWOOD 4.0, DESIGNED AND DEVELOPED BY

