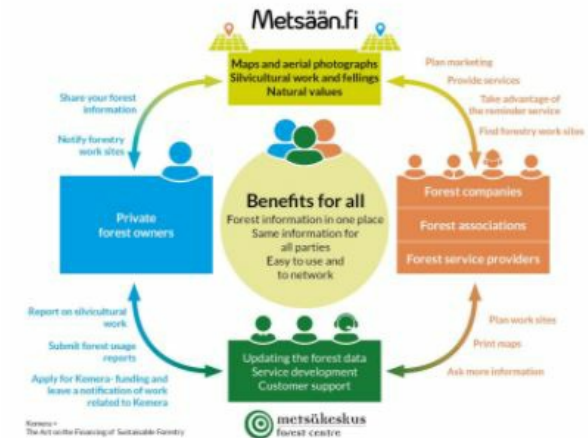


eServices for forest owners and service



Metsään.fi provides eServices for forest owners and forestry service providers. The online application shows the silvicultural possibilities of each forest estate and their compartments.

The Metsään.fi-service included in the Metsään.fi-website is a free e-service for forest owners and corporate actors (companies, associations and service providers) in the forest sector, which aim is to support active decision-making among forest owners by offering forest resource data and maps on forest properties, by making contacts with the authorities easier through online services and to act as a platform for offering forest services, among other things. In addition to the Metsään.fi-service, the website includes open forest data services that offer the users national forest resource data that is not linked with personal information. Metsään.fi is quite easy to use and it provides the forest owner many new flexible services. It is safe system because strong identification is needed. When you log in to

the Metsään.fi service, you will see all the forest holdings you own. You will also see the jointly owned forest holdings where you are a single shareholder. You have one place where you can take care of your forest affairs and plan the management of your forest assets. You will have free access to forest data and a transaction service collected with public funds.

DETAILS

ORIGIN OF WOOD

--

TYPE OF WOOD

--

KIND OF WOOD CONCERNED

--

IMPACT ON ENVIRONMENT & BIODIVERSITY

Very positive, shows the environmental values (habitats of special importance) in the compartments of the forest estate

INCOME EFFECT

Positive, forest owners sell wood and services providers get income

EXPLOITATION POTENTIAL

--

HUB

--

ECONOMIC IMPACT

Communication between forest owners and forestry service providers

SPECIFIC KNOWLEDGE NEEDED

MOBILIZATION POTENTIAL

--

SUSTAINABILITY POTENTIAL - VALUE

--

EASE OF IMPLEMENTATION

--

EASE OF IMPLEMENTATION - EVALUATION

Easy

KEY PREREQUISITES

--

TYPE OF EVENT WHERE THIS BPI HAS BEEN FEATURED

--

JOB EFFECT

Positive, new jobs for service providers

COSTS OF IMPLEMENTATION (EURO - €)

--

Not any specific knowledge needed

MORE DETAILS

CHALLENGE ADDRESSED

--

DOMAIN

Inventory, monitoring
Forest management, ecosystem, resilience

TYPE OF SOLUTION

Advice and services for forest owners

KEYWORDS

virtual tool
3D

DIGITAL SOLUTION

Yes

INNOVATION

No

COUNTRY OF ORIGIN

--

SCALE OF APPLICATION

National

START AND END YEAR

2012 -

CONTACT DATA

OWNER OR AUTHOR

Finnish Forestry Center
Minttu Koponen
minttu.koponen@metsakeskus.fi
<https://www.metsakeskus.fi/en>

REPORTER

Lapland University of Applied Sciences
Merja Laajanen
merja.laajanen@lapinamk.fi

REFERENCES AND RESOURCES

MAIN WEBSITE

<https://www.metsakeskus.fi/fi/asiointi/metsaanfi>

RESOURCES

PROJECT WEBSITE

--

PROJECT REFERENCE

--

PROJECT UNDER WHICH THIS FACTSHEET HAS BEEN CREATED

Rosewood 4.0

POST DATE

12 Aug 2021



This project has received funding from the European Union's Horizon
2020 research and innovation programme under grant agreement No.
862681

A TOOL FROM ROSEWOOD 4.0, DESIGNED AND DEVELOPED BY

