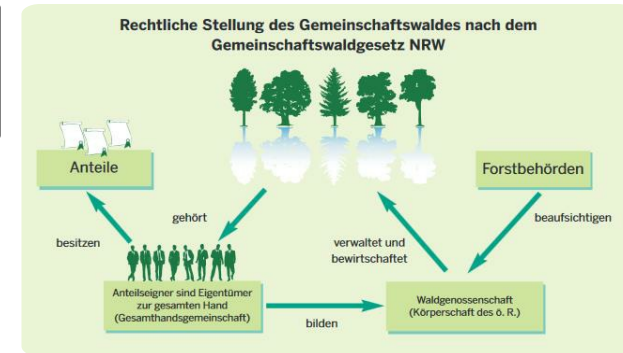


# Community forests in NRW and legal framework



The ownership of the forests is shared by the stockholders as an historically rooted legal framework. Due to different backgrounds in formation, there is no relation between the size of community forests and the number of stockholders.

The four cornerstones of the community forest law from 1975 are:

All stockholders are part of a public corporation, the forest cooperative

It is forbidden to dissolve forest areas which are part of a community forest

Consistent management policies for all kinds of community forests

The possibility to merge forest cooperatives or create new ones

For the creation of the community forest law in 1975, an advisory board with participants from all existing forms of community forests was formed. Because of this involvement the framework is well accepted and has proved its practicability. Since the implementation of the community forest law until 2002 only two new forest cooperatives have been founded. It is not easy to convince private forest owners to make this step

There are several advantages of community forests compared to small private forests:

a chairman can decide for all members how to manage the forest, especially after calamities such as a storm

merger of forest cooperatives and newly founded cooperatives improve the forest ownership structure

## DETAILS

---

### HERKUNFT DES HOLZES

Wald

### ART DES HOLZES

Stammholz

### ART DES BETROFFENEN HOLZES

Stemwood

### AUSWIRKUNGEN AUF UMWELT UND BIODIVERSITÄT

Positive - depending on management decisions

### EINKOMMENSEFFEKT

Positive

### VERWERTUNGSPOTENZIAL

--

### NABE

--

### WIRTSCHAFTLICHE AUSWIRKUNGEN

Estimated up to 50€/ ha

### SPEZIFISCHES WISSEN ERFORDERLICH

### MOBILISIERUNGSPOTENZIAL

1 - 2 m<sup>3</sup>/ha in region of NRW

### POTENZIAL FÜR NACHHALTIGKEIT - WERT

--

### LEICHTE IMPLEMENTIERUNG

high

### LEICHTE IMPLEMENTIERUNG - BEWERTUNG

--

### WICHTIGE VORAUSSETZUNGEN

Regional ownership structures and legal frameworks need to be suitable; participation processes needed in the implementation

### ART DER VERANSTALTUNG, AUF DER DIESE BPI VORGESTELLT WURDE

--

### ARBEITSPLATZEFFEKT

More efficient forest operations and thinnings possible with higher forest work force

### KOSTEN DER IMPLEMENTIERUNG (EURO - €)

--

Medium; need for specific regional structure knowledge and also administrative expertise

## MEHR DETAILS

---

### ANGESPROCHENE HERAUSFORDERUNG

--

### SCHLÜSSELWÖRTER

--

### HERKUNFTSLAND

Deutschland

### DOMÄNE

Eigentümerschaft, Kooperation

### DIGITALE LÖSUNG

Nein

### UMFANG DER ANWENDUNG

Regional/sub-national

### ART DER LÖSUNG

--

### INNOVATION

Nein

### ANFANGS- UND ENDJAHR

--

## REFERENCES AND RESOURCES

---

### HAUPT-WEBSITE

[https://recht.nrw.de/lmi/owa/br\\_bes\\_detail](https://recht.nrw.de/lmi/owa/br_bes_detail)

### PROJEKT-WEBSITE

--

### PROJEKT-REFERENZ

--

### RESSOURCEN

--

---

PROJEKT, IN DESSEN RAHMEN DIESES FACTSHEET ERSTELLT WURDE

Rosewood

BEITRAGSDATUM

15 Nov. 2019

---



This project has received funding from the European Union's Horizon  
2020 research and innovation programme under grant agreement No.  
862681



---

A TOOL FROM ROSEWOOD 4.0, DESIGNED AND DEVELOPED BY

